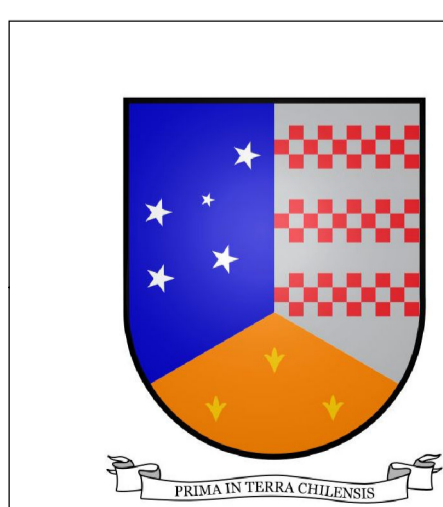
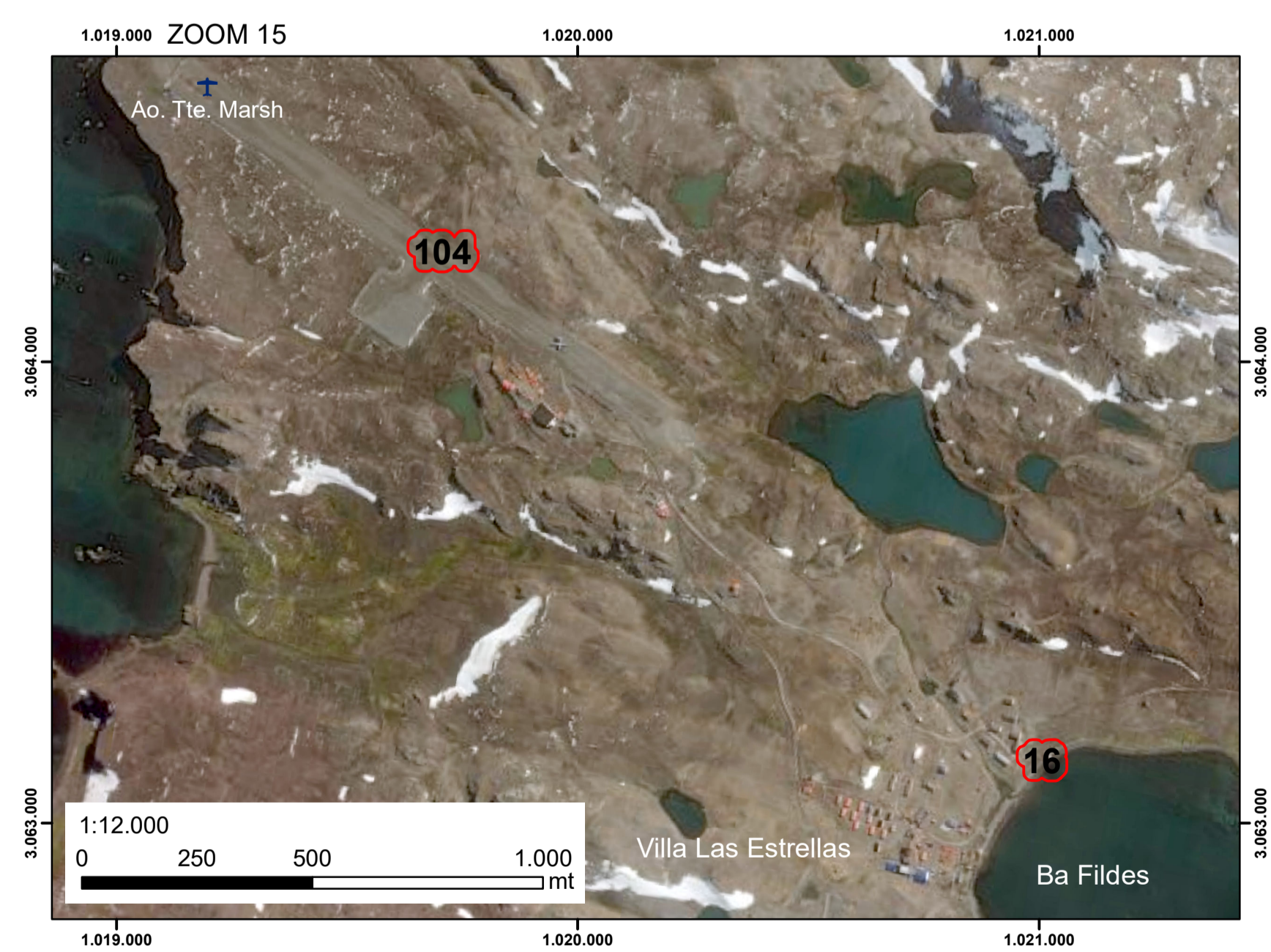
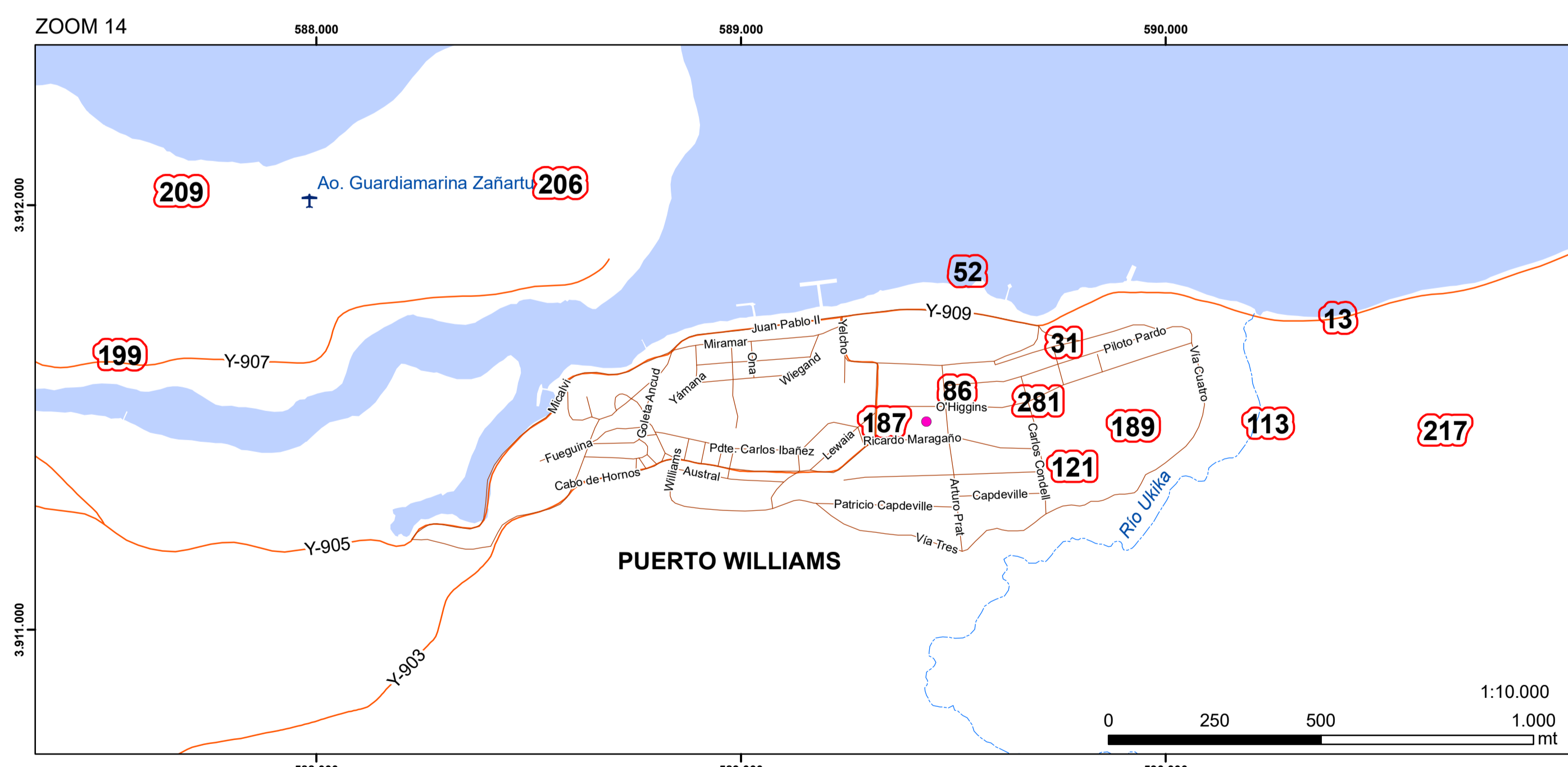
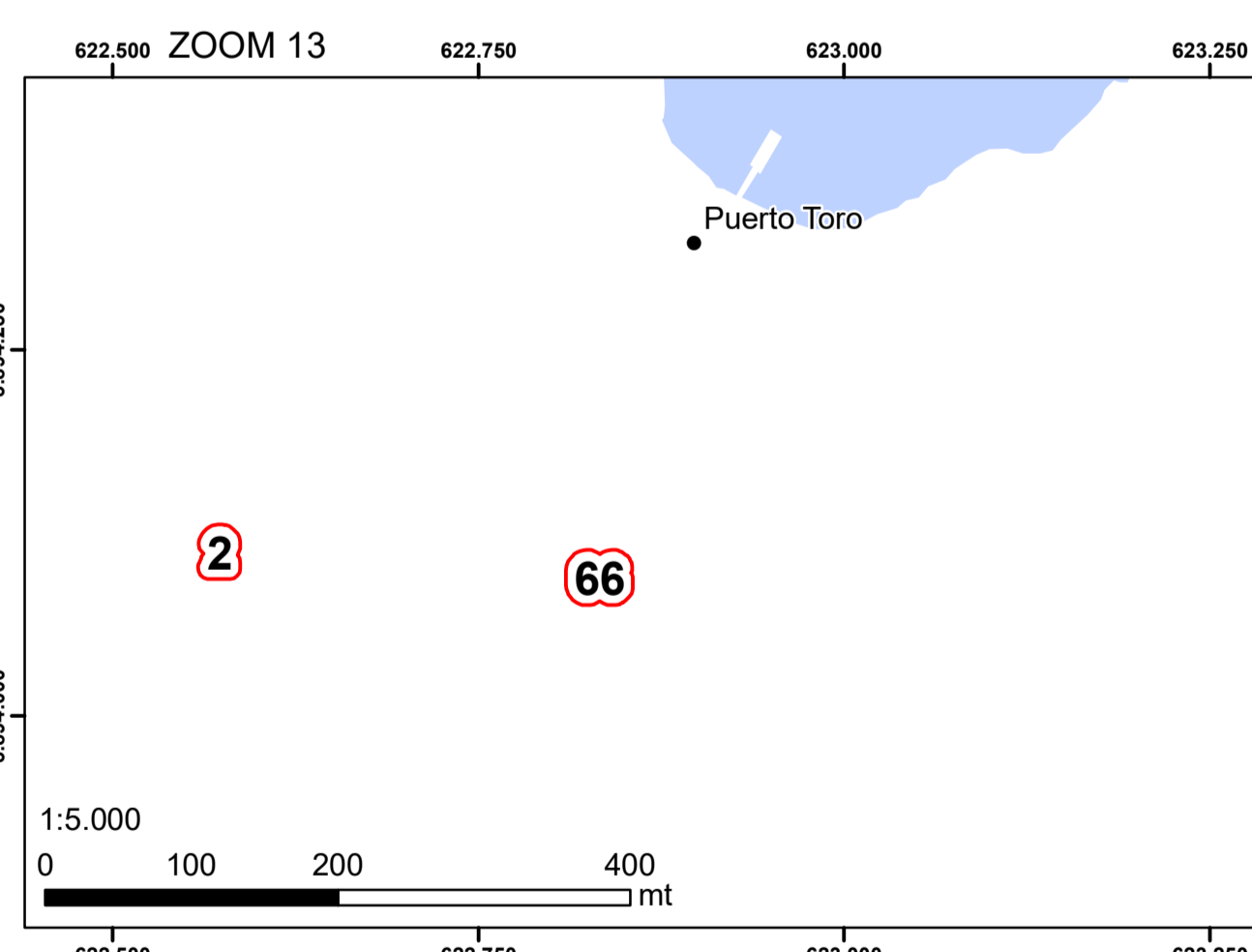
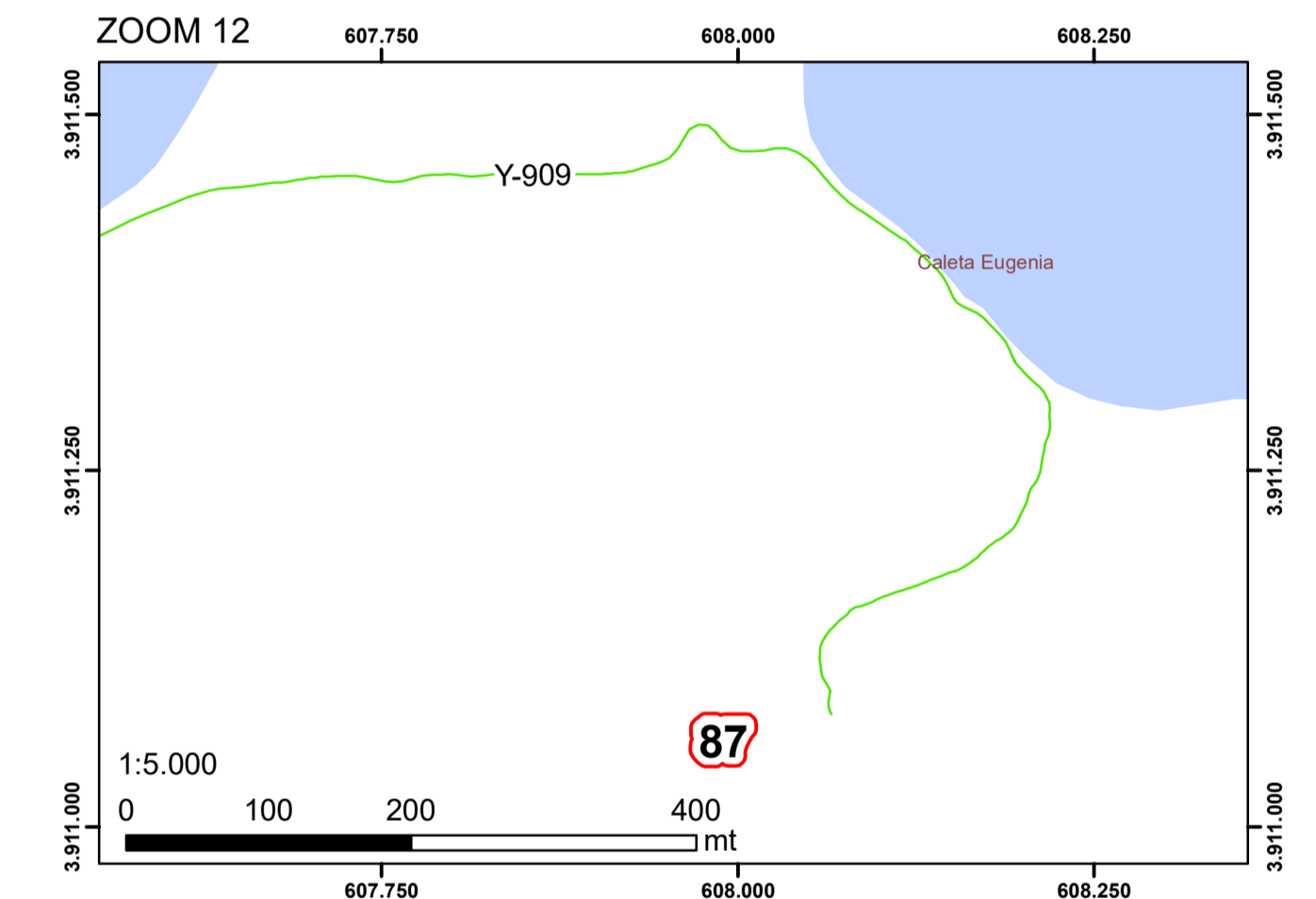
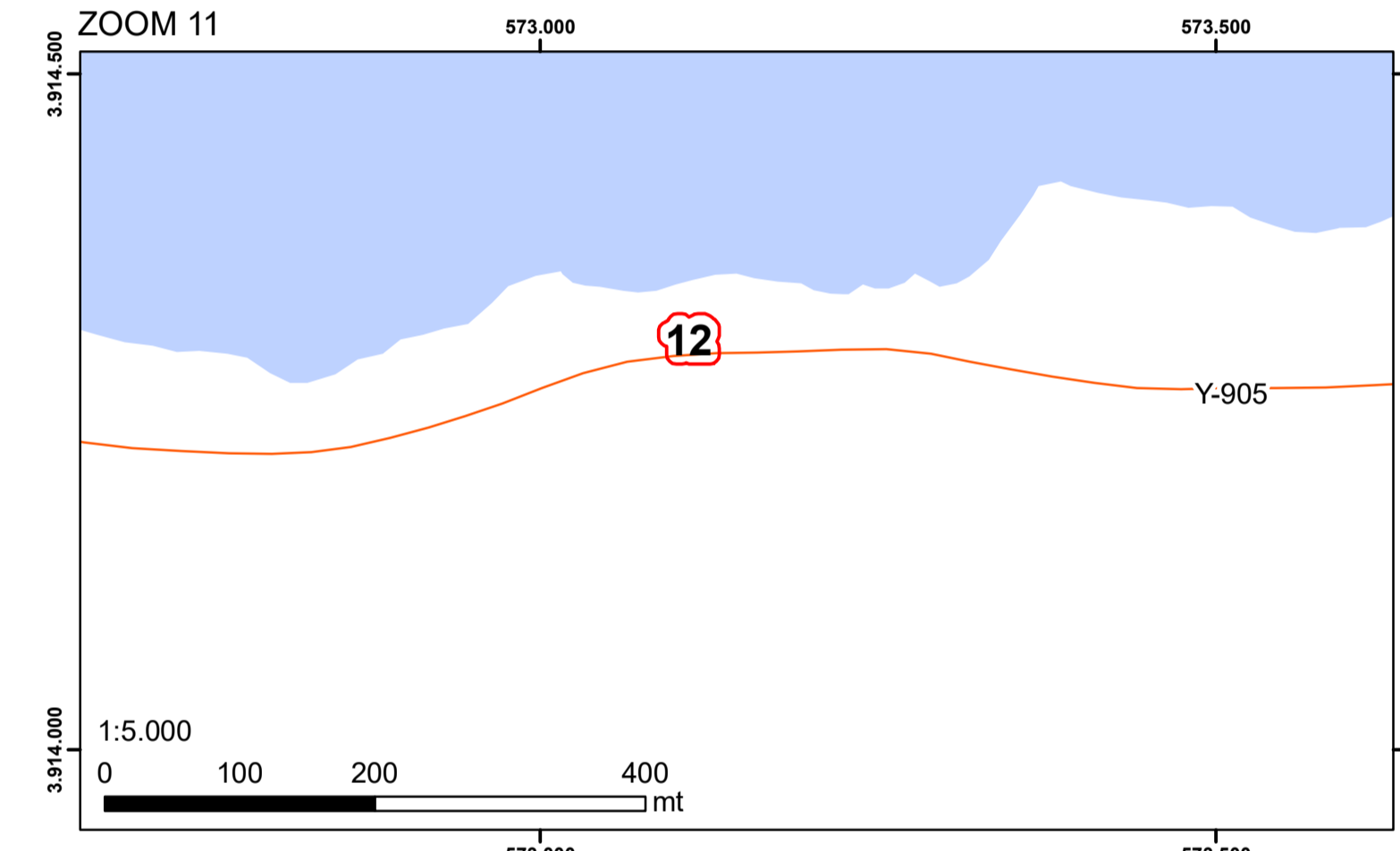
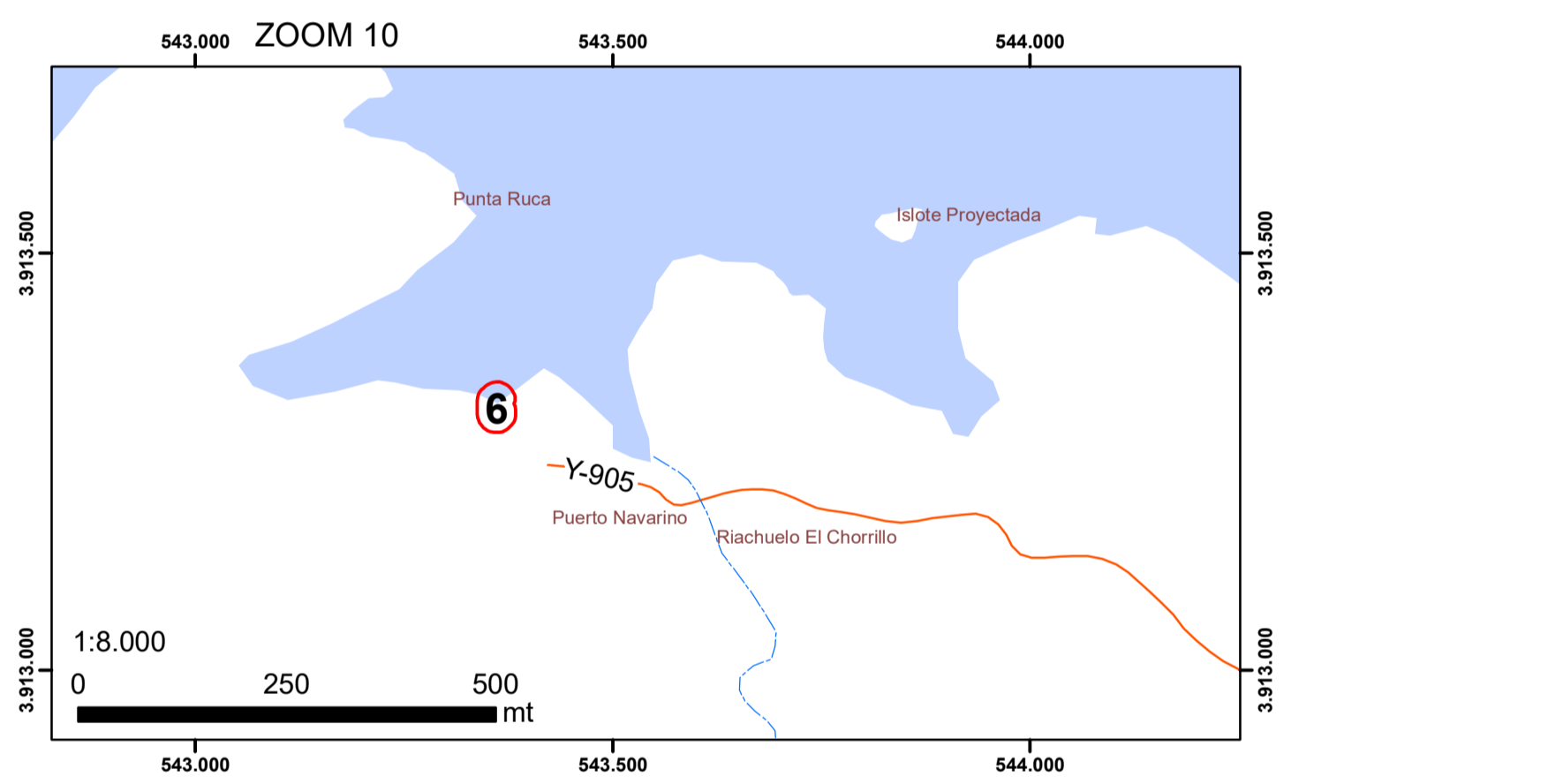
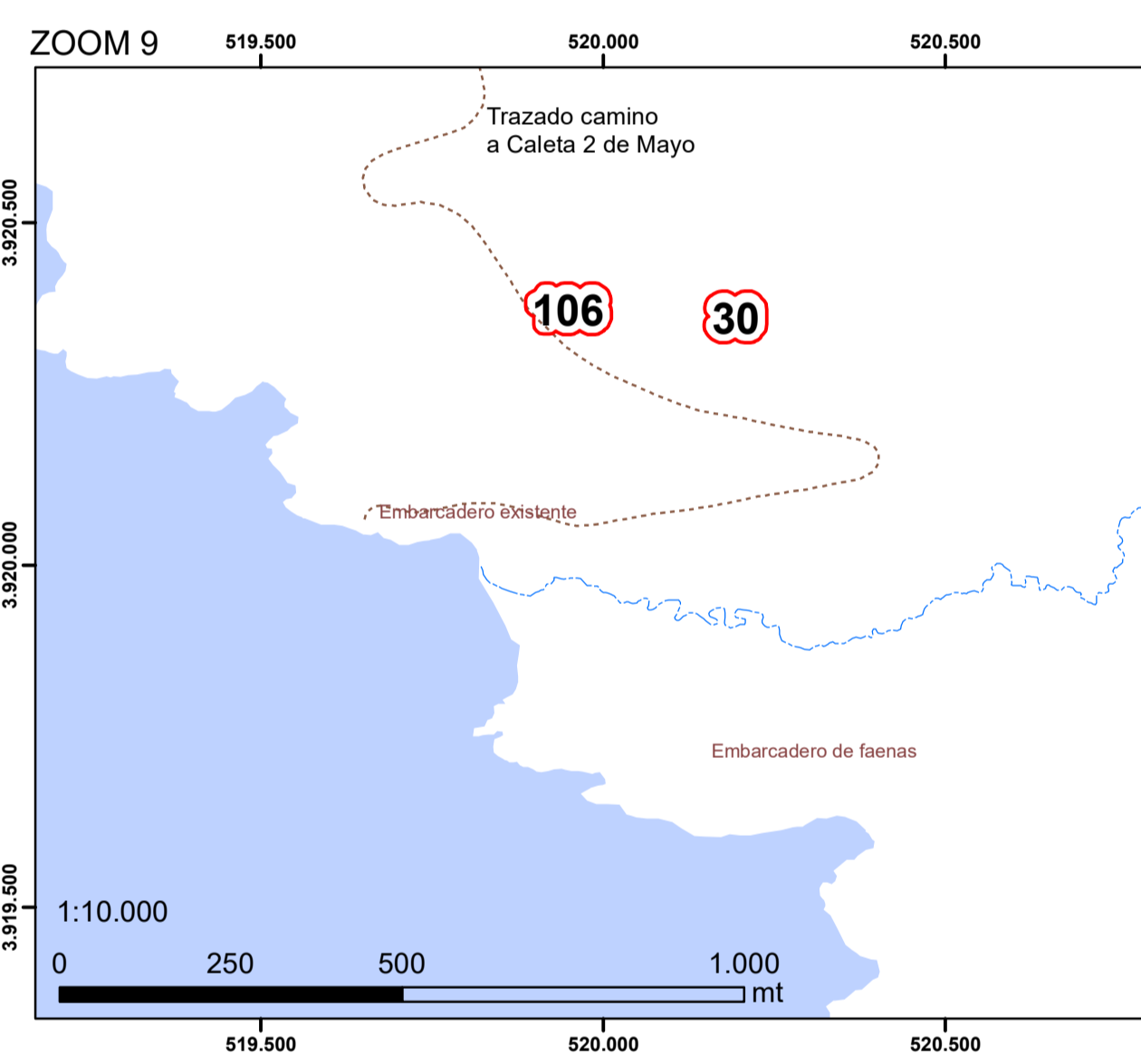
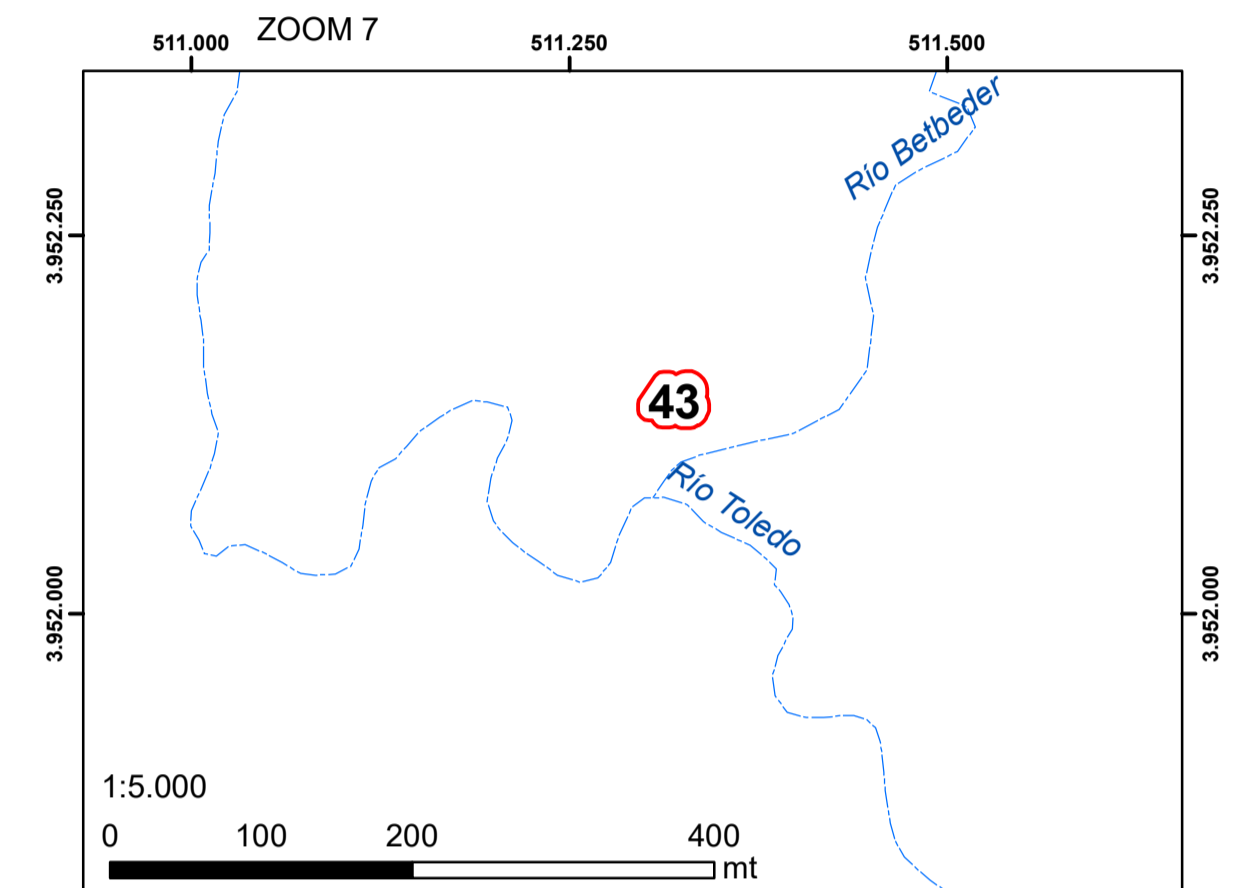
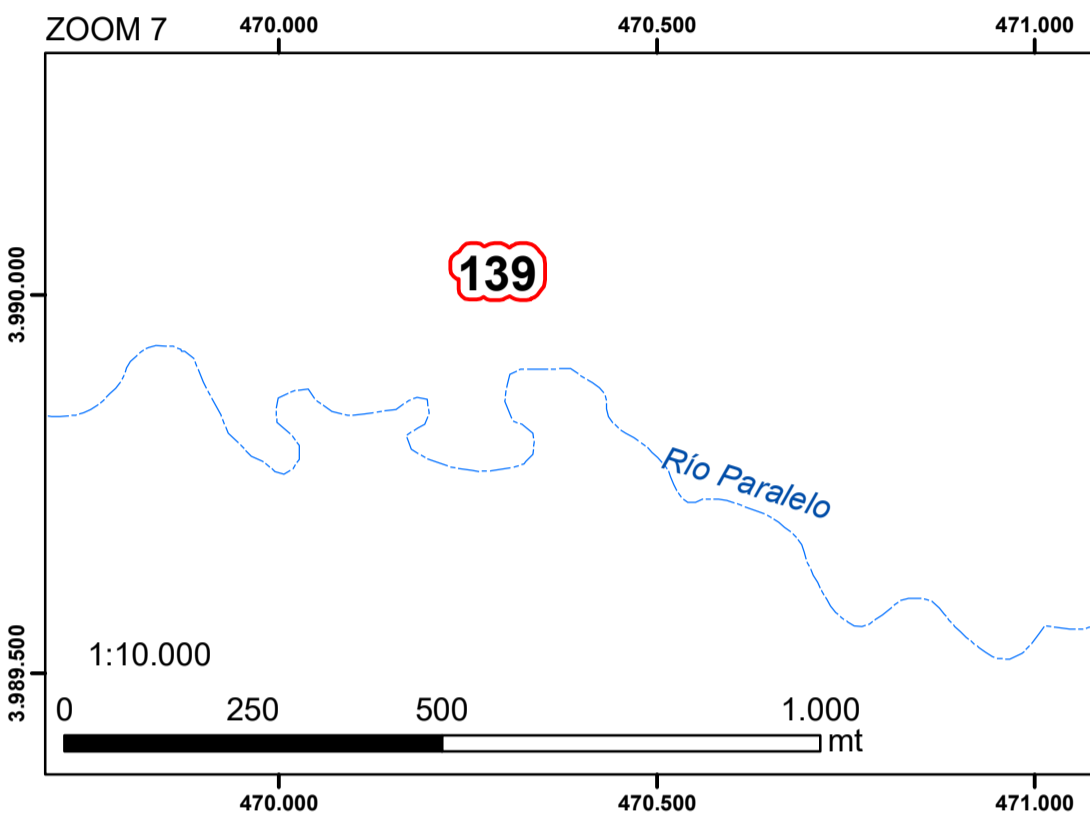
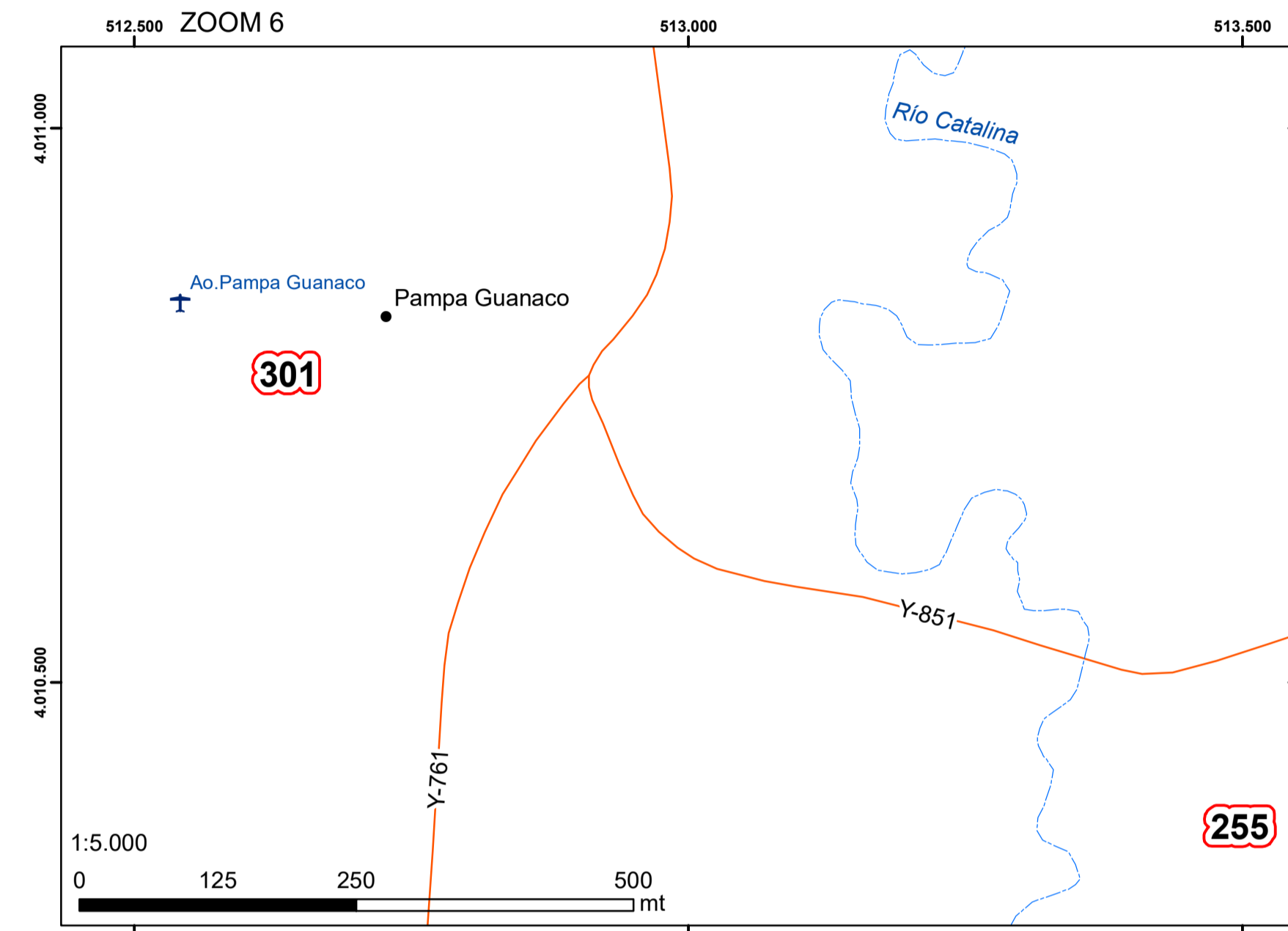
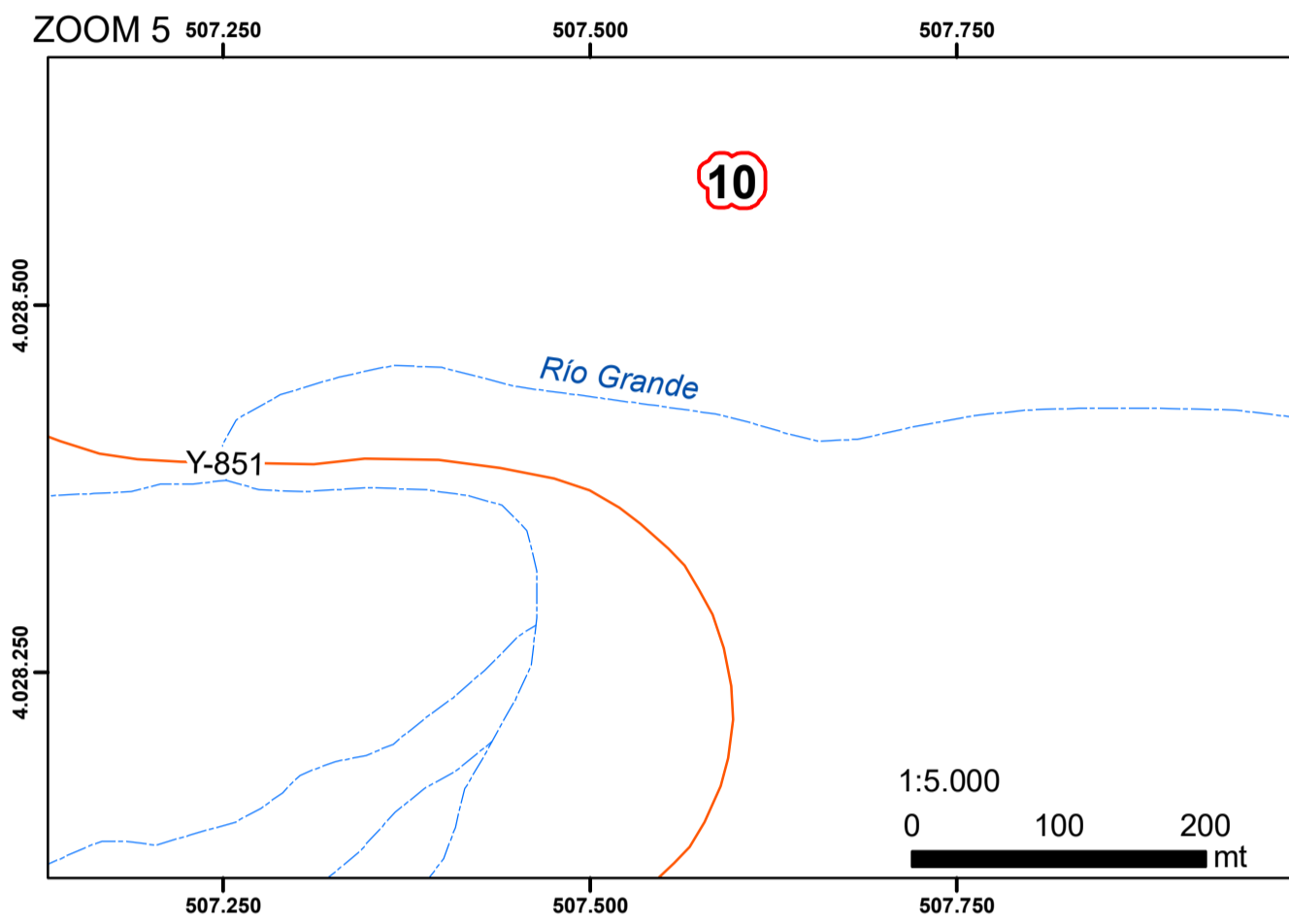
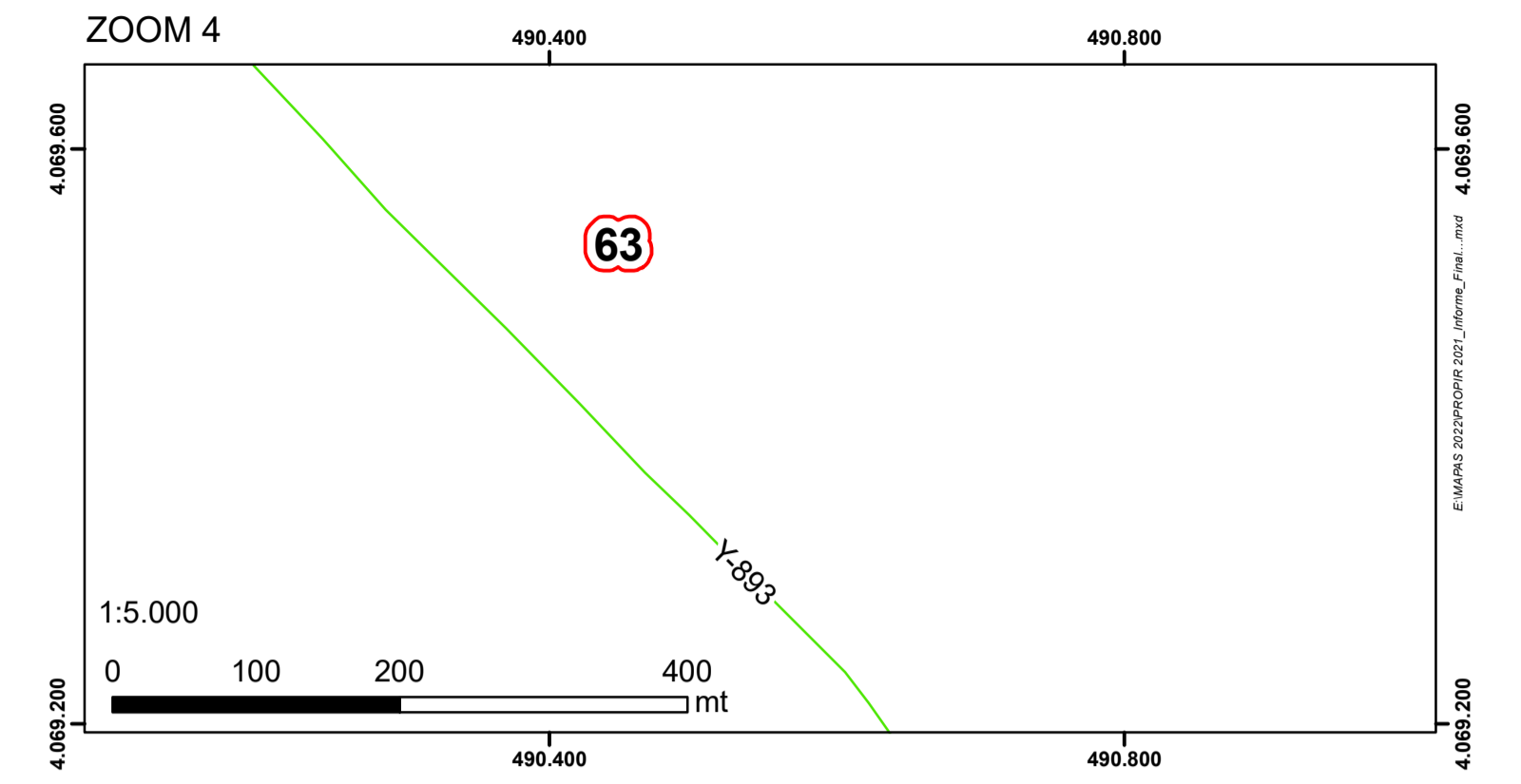
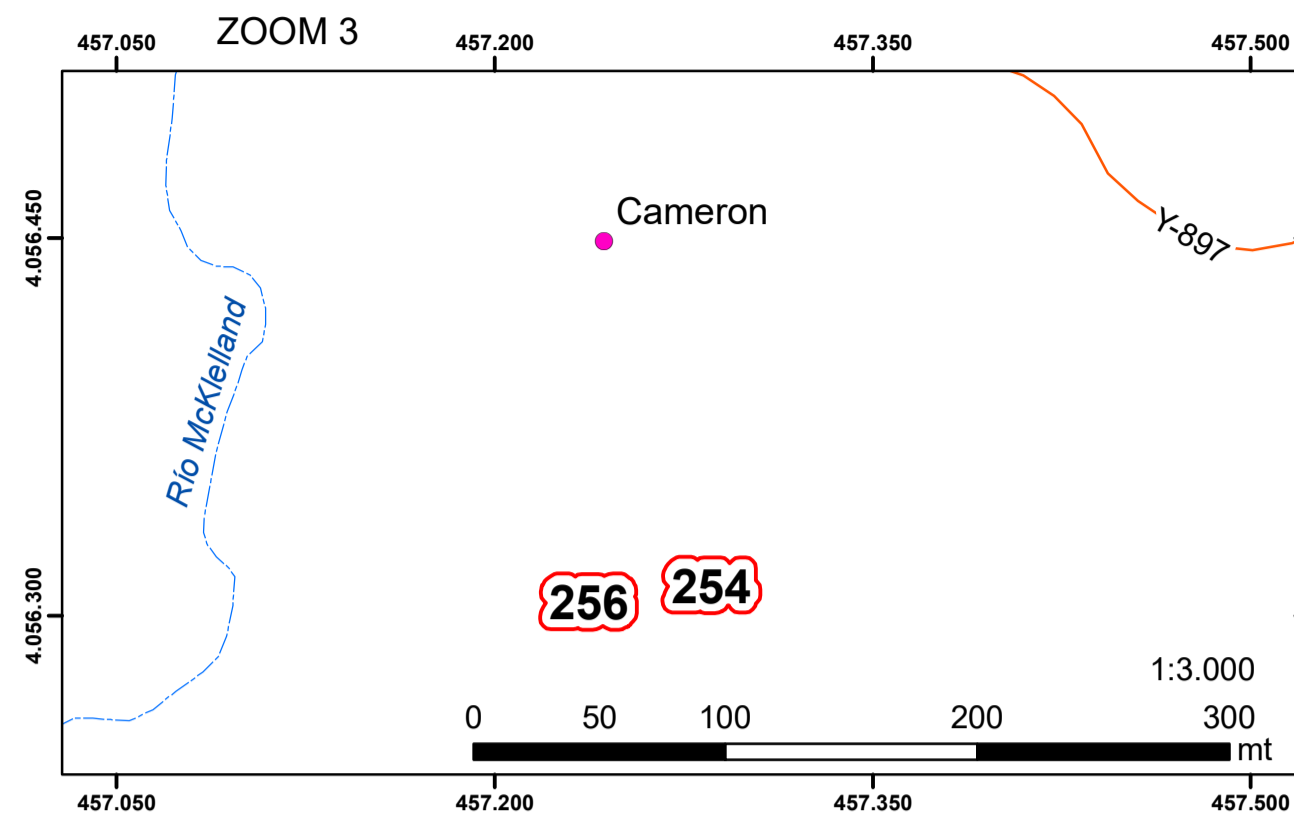
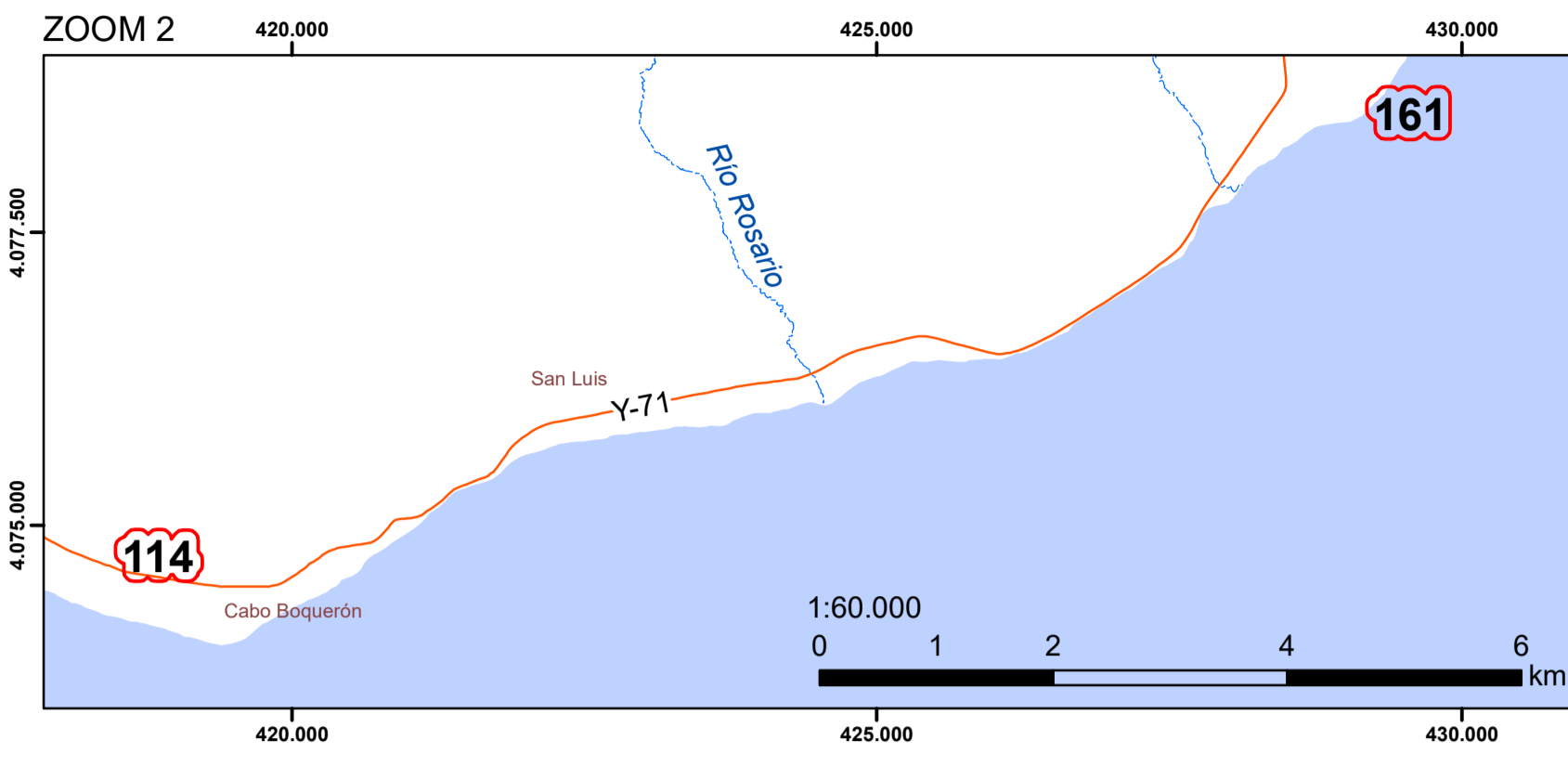
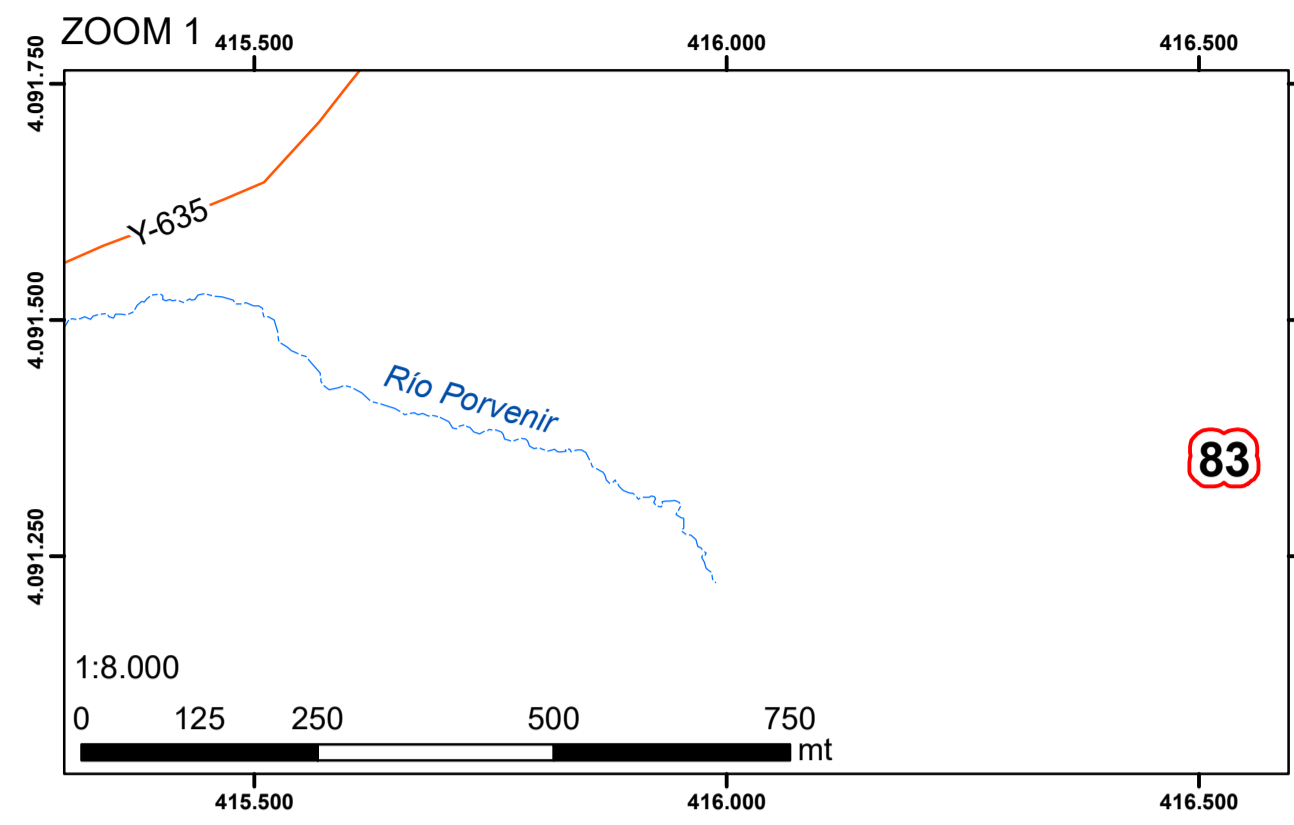


# INICIATIVAS DE INVERSIÓN REGIONAL - PROPİR 2021 (Con código BIP). REGIÓN DE MAGALLANES Y DE LA ANTÁRTICA CHILENA.



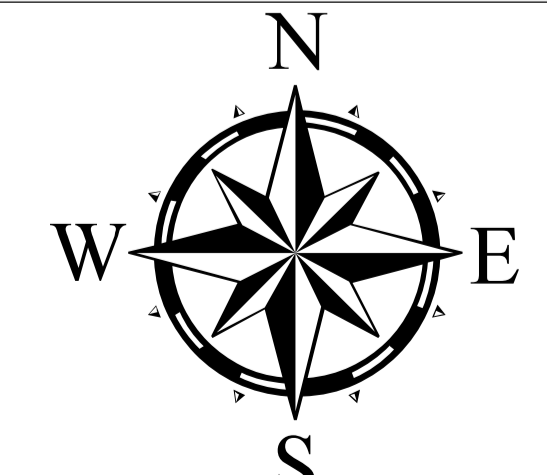
Elaborado por:  
Departamento de  
Ordenamiento Territorial  
División de Planificación  
y Desarrollo Regional  
DIPLADER  
Gobierno Regional de  
Magallanes y de la Antártica Chilena

- Asentamientos Humanos
- Capital Regional
- Capital Comunal
- Centro Poblado
- Aeropuerto
- Aeródromo
- Propir 2021
- Sistema Hídrico
- Cuerpos de Agua
- Argentina
- Región de Aysén

- Red Vial
- Hormigón
- Asfalto
- Ripio
- Tierra

- Límites Administrativos
- Regional
- Provincial
- Comunal

— Límite Internacional  
"La representación del Límite Internacional ha sido autorizada para una escala 1:50.000. Cualquier representación a escalas mayores puede no corresponder completamente al trazado de los límites oficiales".  
DIFROL Junio 2022



Datum WGS 84  
Proyección UTM  
Huso 19 F